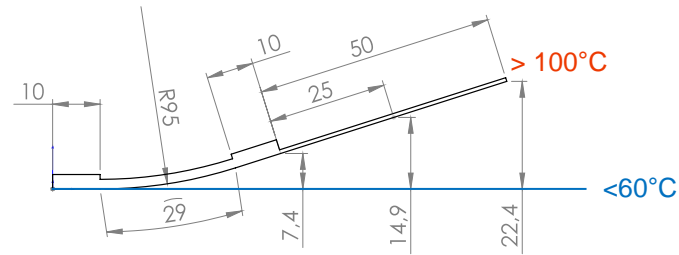


Datasheet Actuation Module: *Curve*® *plugged 2910M*

- Active length: **29 mm**
- Module size: **49 mm x 10 mm x 2.5 mm**
- Bending: **medium (M)**
- Module weight: **1.5 g**

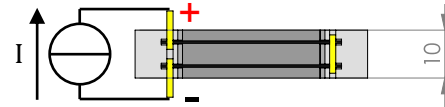
Hosting structure and actuation module



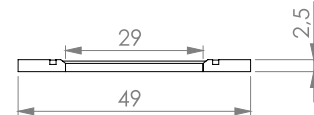
- Example hosting structure: stainless steel 0.45 mm
- Load range with minor reduction of deflection and high cycling stability ($> 200\ 000$)

| | |
|-----------------|-------|
| at module edge: | 127 g |
| at 25 mm: | 77 g |
| at 50 mm: | 56 g |

Actuation module



- Operating mode: **plugged**
- Thermal activation by: resistive heating
- Electronic circuit: all wires in series
- Resistivity: 0.3 Ohm
- Full Activation (DC): e.g. 3 A for 15 s / 4 A for 4 s



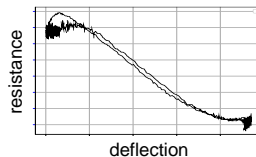
© CompActive GmbH

All values are only estimations!

Customized high performance actuation modules by ...

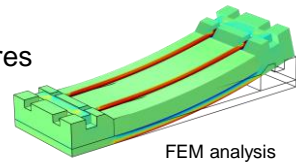
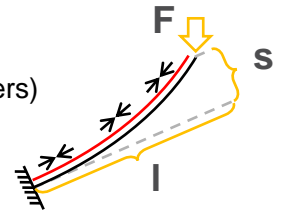
... high-tech solutions

- reliable load transfer
- proven cycle stability
- injection molded frame elements
- special SMA material specifications
- high temperature FRP
- self-sensing capability



... individual design

- substrate (metals, polymers)
- size
- deflection
- load / cycles
- wire material / temperatures
- electrical resistance



... customized mechanical fixation

- adhesive films
- liquid adhesives
- bolts, rivets, screws
- plug-on

... various electrical connection

- crimping
- soldering
- plugging in
- welding



© CompActive GmbH