

# Datasheet Actuation Module: *Curve*® plugged 1910E24

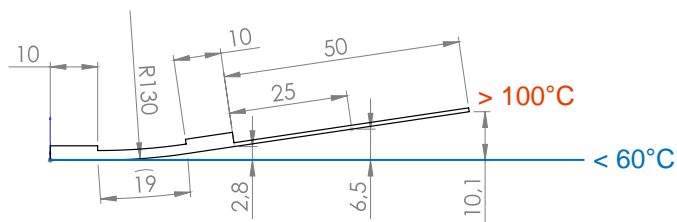


- Active length: **19 mm**
- Module size: **39 mm x 10 mm x 3.3 mm**
- Bending: **low (E24)**
- Module weight: **1.9 g**

## Hosting structure and actuation module

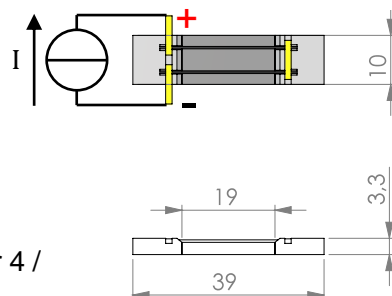
- Example hosting structure: stainless steel 0.55 mm
- Load range with high cycling stability (> 300.000)

at module edge:	690 g
at 25 mm:	370 g
at 50 mm:	250 g



## Actuation module

- Operating mode: **plugged**
- Thermal activation by: **resistive heating**
- Electronic circuit: **all wires in series**
- Resistivity: **0.2 Ohm**
- Full Activation (DC): **e.g. 3 A for 15 s / 4 A for 4 / 5 A for 1.3 s**



© CompActive GmbH

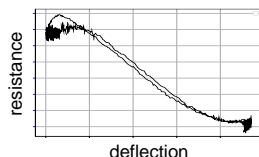
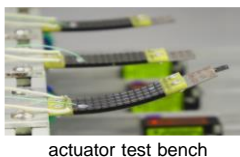
All values are only estimations!

## Customized high performance actuation modules by ...



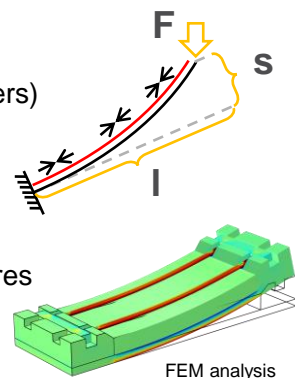
### ... high-tech solutions

- reliable load transfer
- proven cycle stability
- injection molded frame elements
- special SMA material specifications
- high temperature FRP
- self-sensing capability



### ... individual design

- substrate (metals, polymers)
- size
- deflection
- load / cycles
- wire material / temperatures
- electrical resistance



### ... customized mechanical fixation

- adhesive films
- liquid adhesives
- bolts, rivets, screws
- plug-on

### ... various electrical connection

- crimping
- soldering
- plugging in
- welding



© CompActive GmbH